

Document Name: **FAX Setup**  
Version: **01.01**  
Date: **2005-04-05**  
DocId: **FaxSetup\_V01.01**  
Status: **Released**

#### General Notes

Simcom offers this information as a service to its customers, to support application and engineering efforts that use Simcom products. The information provided is based upon requirements specifically provided to Simcom by the customers. Simcom has not undertaken any independent search for additional relevant information, including any information that may be in the customer's possession. Furthermore, system validation of this Simcom product within a larger electronic system remains the responsibility of the customer or the customer's system integrator. All specifications supplied herein are subject to change.

#### Copyright

This document contains proprietary technical information which is the property of SIMCOM Limited., copying of this document and giving it to others and the using or communication of the contents thereof, are forbidden without express authority. Offenders are liable to the payment of damages. All rights reserved in the event of grant of a patent or the registration of a utility model or design. All specification supplied herein are subject to change without notice at any time.

*Copyright © SIMCOM Limited. 2004*

## SCOPE

Thanks you select SIMCOM GSM/GPRS module.

This product has standard AT command interface, and can provide GSM call, short message and GPRS net services, etc.

Please read this user guide carefully. You can realize the powerful function and the easy operation method of the module.

This module is used in voice or data communication mainly. We are not charge with the duty of personal injury and property loss for the custom abnormal operation. Please design the corresponding product according to the technical specification and reference in the handbook. And note the general safe item when use mobile product especially GSM product.

This document is subject to change without notice at any time.

This document suits for SIM100S, SIM100F, SIM100C, SIM200, SIM300 module.

## Revision History

Data	Version	Page	Description of change
2005-04-05	01.01	8	Change the WinFax configuration: Add the Initialization string sequence, change Reset command

## Contents

1 Introduction.....	5
2 What you need .....	5
2.1 FAX service from your network provide.....	5
2.2 Fax software Installation and configuration .....	5
3 Configuration WinFax10.0 .....	5
3.1 Start WinFax10.0 .....	5
3.2 Configuration WinFax10.0 .....	6
3.3 Send Fax.....	8

## 1 Introduction

This document describes how to send and receive a fax at PC with the software WinFax10.0 using the prototype SIMCOM GSM/GPRS. Configurations and settings for other software may slightly differ, but the general proceeding is similar.

## 2 What you need

### 2.1 FAX service from your network provide

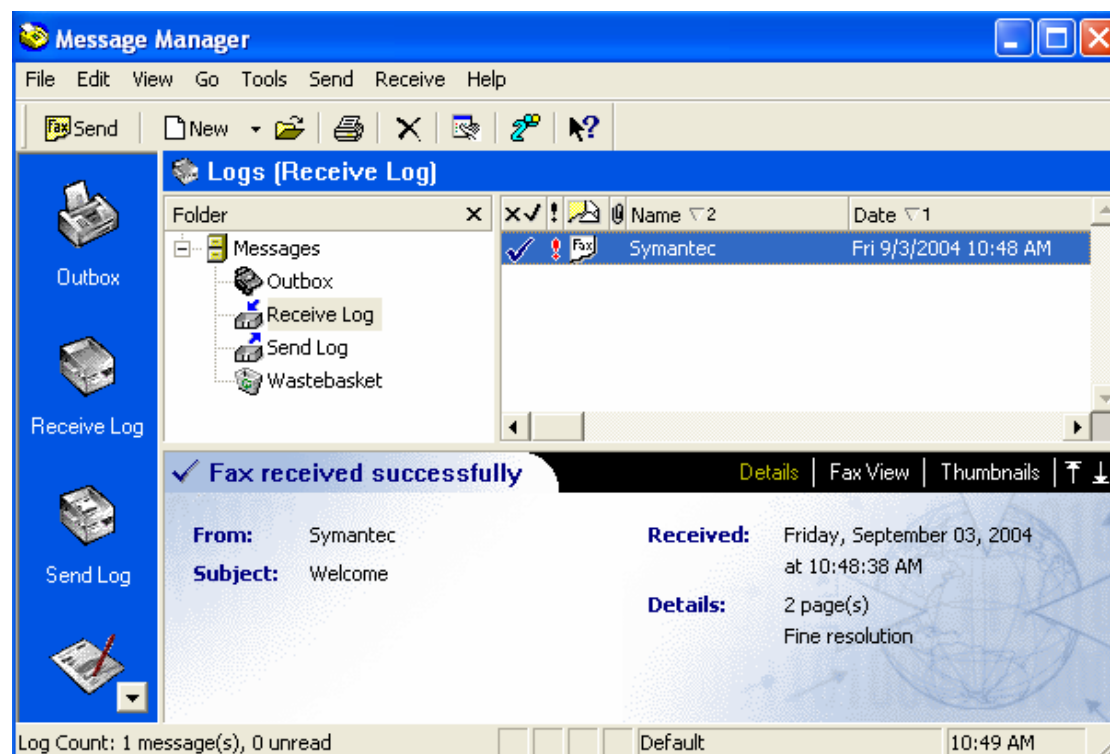
Before you send or receive a fax, contact your network provider to obtain the FAX service

### 2.2 Fax software Installation and configuration

You can set up the fax software WinFax 10.0, follow the steps in chapter 3

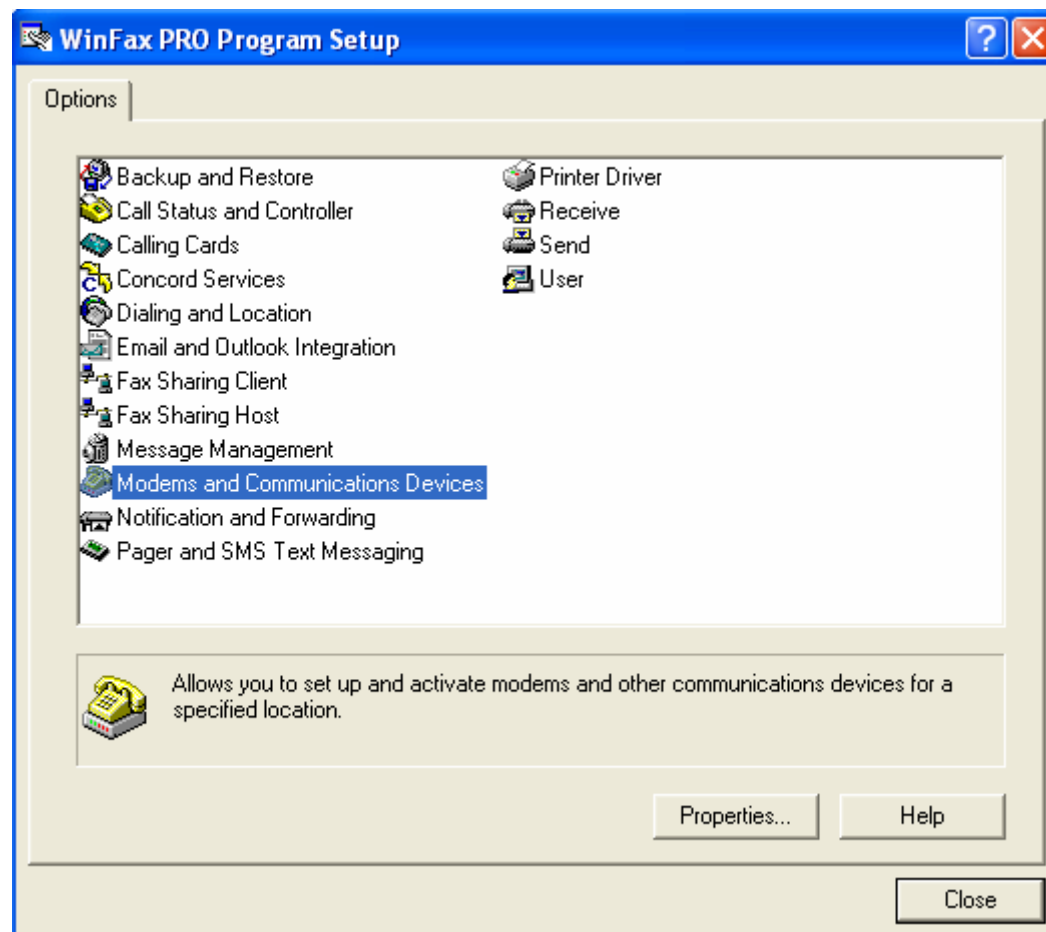
## 3 Configuration WinFax10.0

### 3.1 Start WinFax10.0

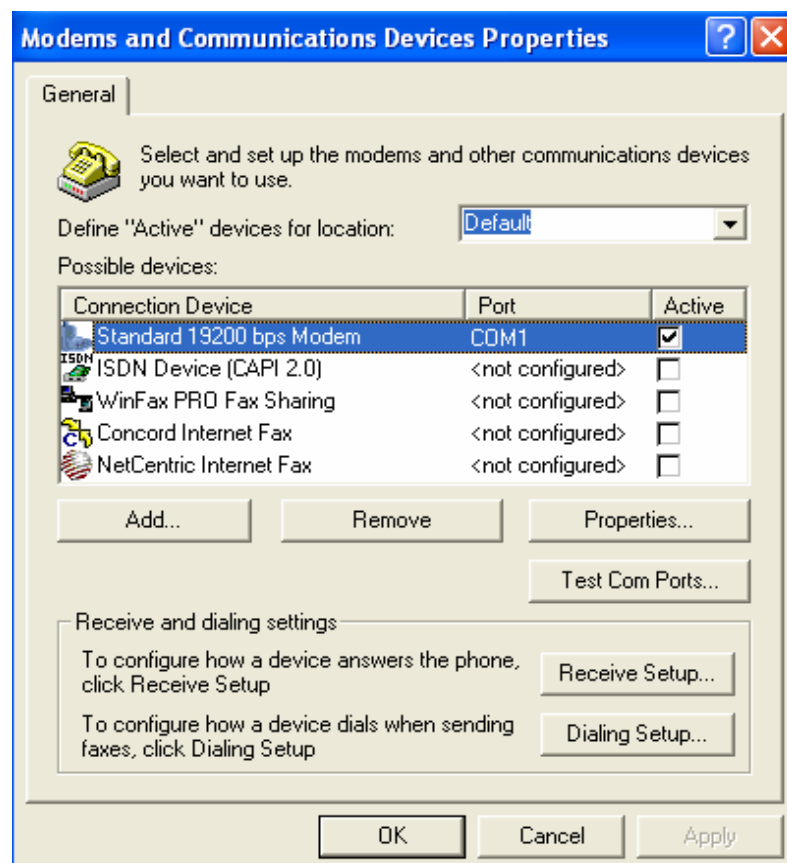


### 3.2 Configuration WinFax10.0

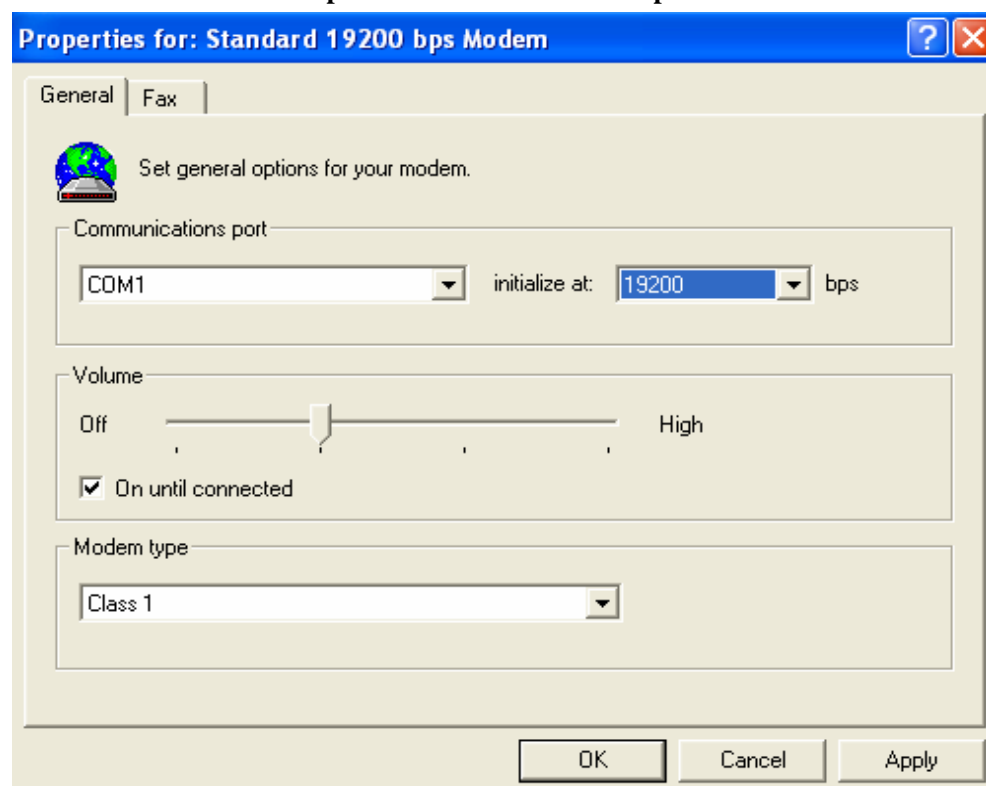
In the main menu, Choose **“Tools”** -> **“Program Setup”**



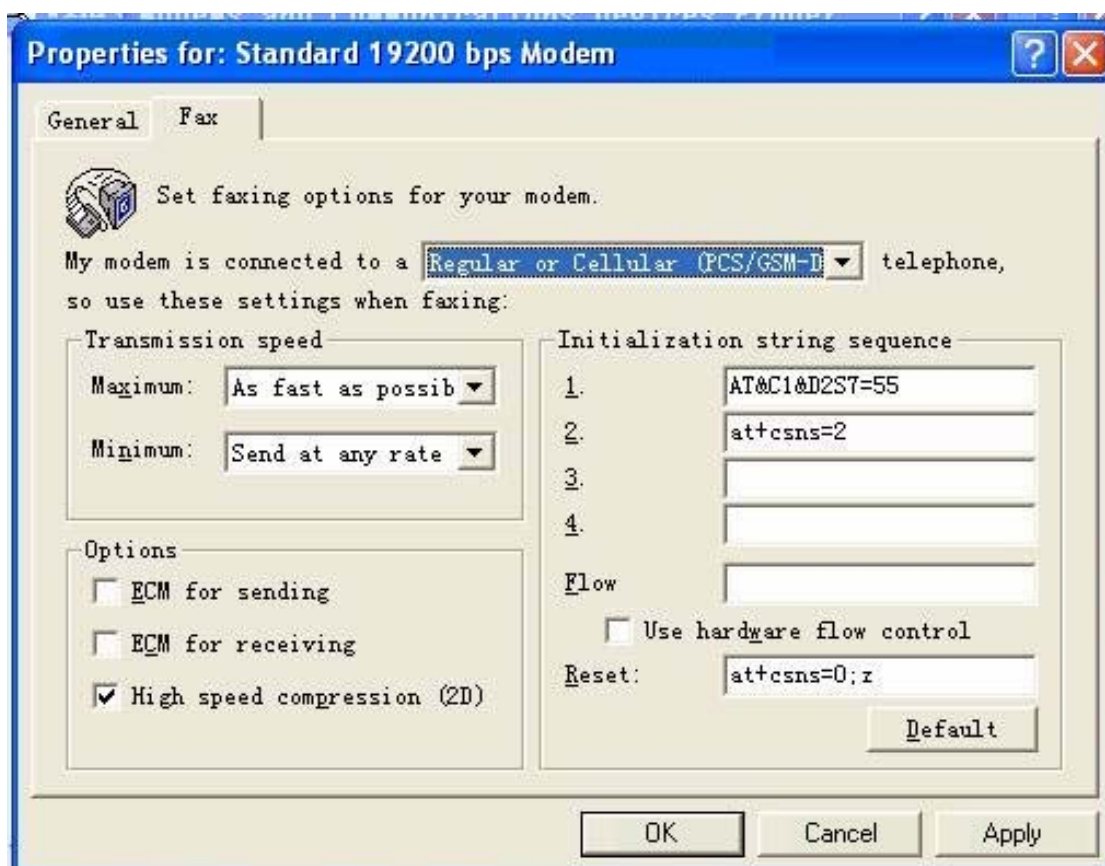
Choose **“Modems and Communications Devices”** option, Click **“Properties”**



Choose “**Standard 19200 bps modem**” tab, Click “**Properties**”

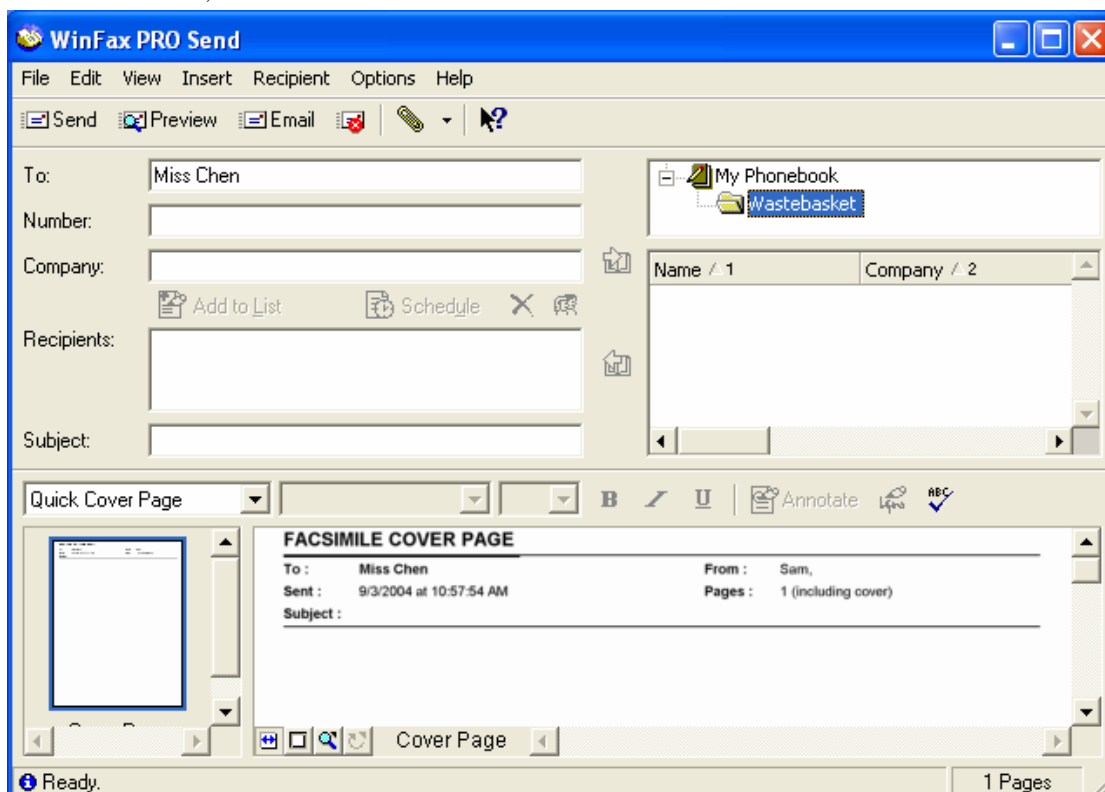


Choose “**General**” tab, set the “**COM1**”, “**19200**”, “**Class 1**” parameters as shown in the illustrations up; and then choose “**Fax**” tab, set the parameters as shown in the illustrations below,  
**Note: Not choose “Use hardware flow control”**



### 3.3 Send Fax

In the main menu, choose "Send" -> "Send New Fax"





Type the relative data and Facsimile cover page, Click “**Send**” to finish the transmission.

